

A woman with dark hair and glasses, wearing a white long-sleeved shirt, is looking down at her smartphone. She is standing in a crowded city street at night, with blurred lights and other people in the background. The overall scene is dimly lit, with the city lights creating a bokeh effect.

citrix

원가 경쟁력을 위한 시트릭스 VDI의
HMC 기술 지원 방안

시트릭스 코리아

김정도 상무

2024년 3월 27일

Confidentiality & Disclaimer

The information in this document is confidential information of Cloud Software Group, Inc. and/or its affiliates. Use, duplication, transmission, or republication for any purpose without the prior written consent of Cloud Software Group, Inc. is expressly prohibited.

This document (including, without limitation, any product roadmap or statement of direction data) illustrates the planned testing, release and availability dates for Cloud Software Group, Inc. products and services. This document is provided for informational purposes only and its contents are subject to change without notice. Cloud Software Group, Inc. makes no warranties, express or implied, in or relating to this document or any information in it, including, without limitation, that this document, or any information in it, is error-free or meets any conditions of merchantability or fitness for a particular purpose.

The material provided is for informational purposes only, and should not be relied on in making a purchasing decision. The information is not a commitment, promise or legal obligation to deliver any material, code, or functionality. The development, release, and timing of any features or functionality described for our products remains at our sole discretion.

During the course of this presentation, Cloud Software Group, Inc. or its representatives may make forward-looking statements regarding future events Cloud Software Group, Inc.'s future results or our future financial performance. These statements are based on management's current expectations. Although we believe that the expectations reflected in the forward-looking statements contained in this presentation are reasonable, these expectations or any such forward-looking statements could prove to be incorrect and actual results or financial performance could differ materially from those stated herein. Cloud Software Group, Inc. does not undertake to update any forward-looking statement that may be made from time to time or on its behalf.

Cloud Software Group 소개



<https://www.cloud.com>

citrix

NetScaler

TIBCO

ibi
Information Builders

JASPERSOFT

ShareFile

XenServer™

Foresight™

Data™ Synapse

\$4.1B **7.8%** **12%** **400K+**

total ARR

20-22
ARR CAGR

market growth

customers

대규모 미션 크리티컬
엔터프라이즈 소프트웨어

- 전세계 1억명 이상의 고객
- Private, Public, Managed 등 다양한 클라우드 환경 지원
- 데이터, 자동화, 분석 및 협업 솔루션

멀티 클라우드 시대 다양한 EUC 컴퓨팅 환경

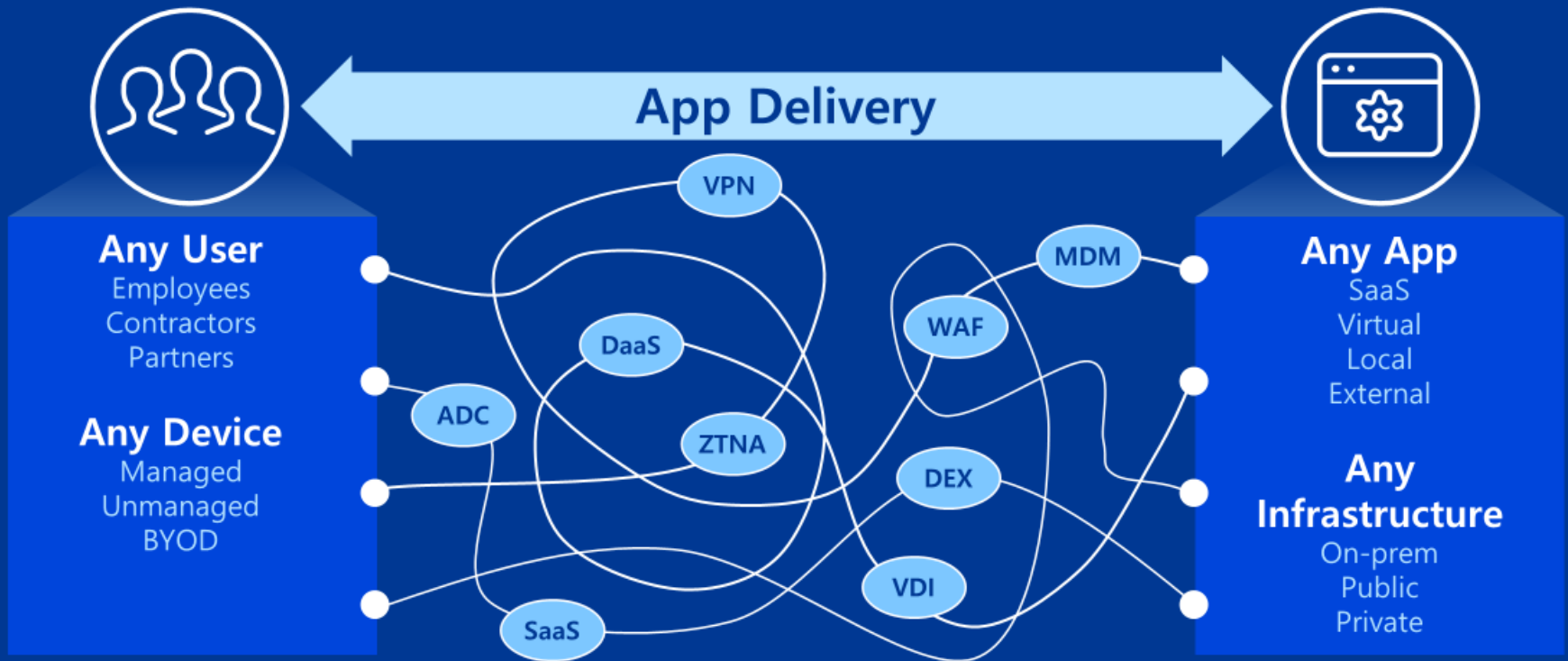
User & Endpoint

Network & Access

Apps & Desktops



안전한 어플리케이션 사용의 어려움



Citrix App Delivery 플랫폼 비전

Secure Access and Secure Application Delivery



Any User

- Employees
- Contractors
- Partners

Any Device

- Managed
- Unmanaged
- BYOD



ZTNA



Endpoint Protection



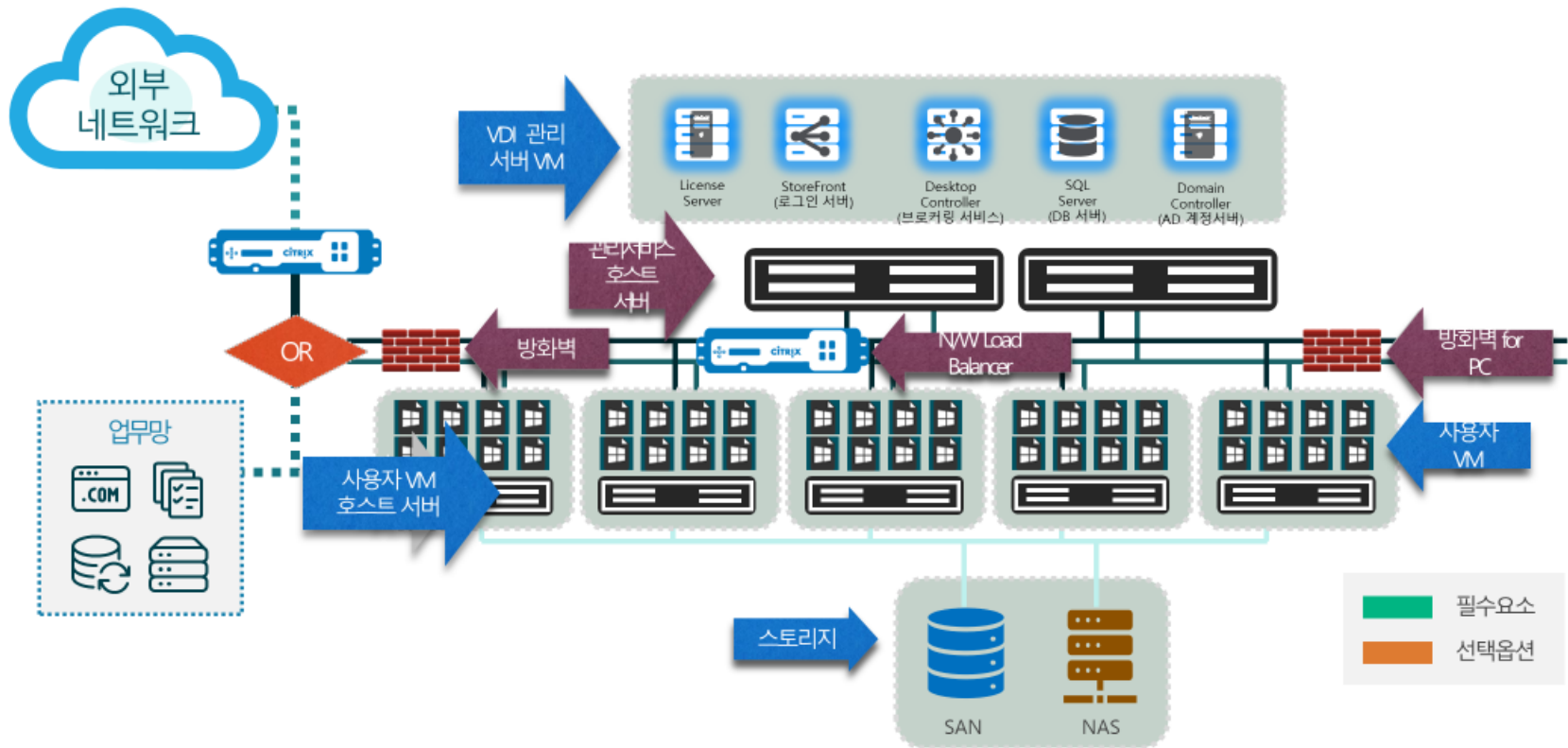
Any App

- SaaS
- Virtual
- Local
- External

Any Infrastructure

- On-prem
- Public
- Private

Citrix VDI 아키텍처



Citrix VDI TCO 구성 요소

라이선스 비용

RDS CAL, Windows 7 support,
Citrix customer success services

운영 비용

Managing on-prem Citrix infrastructure,
patching & updates

인프라 비용

Citrix + workloads
compute + storage + networking

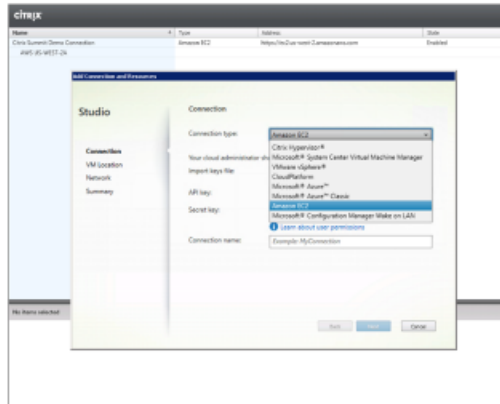
VDI 인프라 아키텍처 선택권



Citrix VDI / DaaS Platform

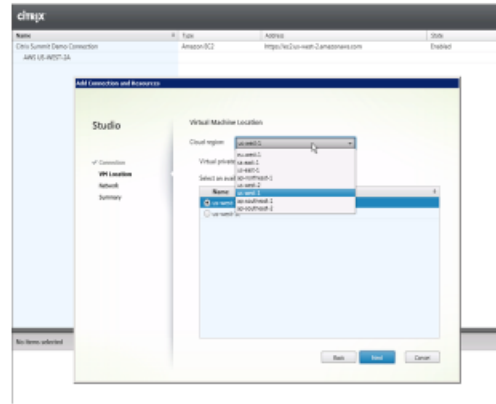


동일한 관리 UI, 동일한 관리 워크플로우



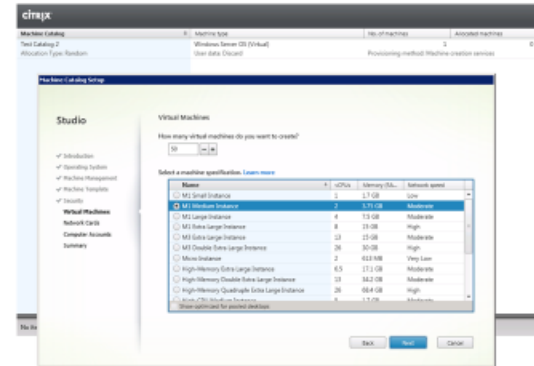
Create Host

Host Selection now includes AWS and CloudPlatform



Configure Host

Select your cloud region and availability zone



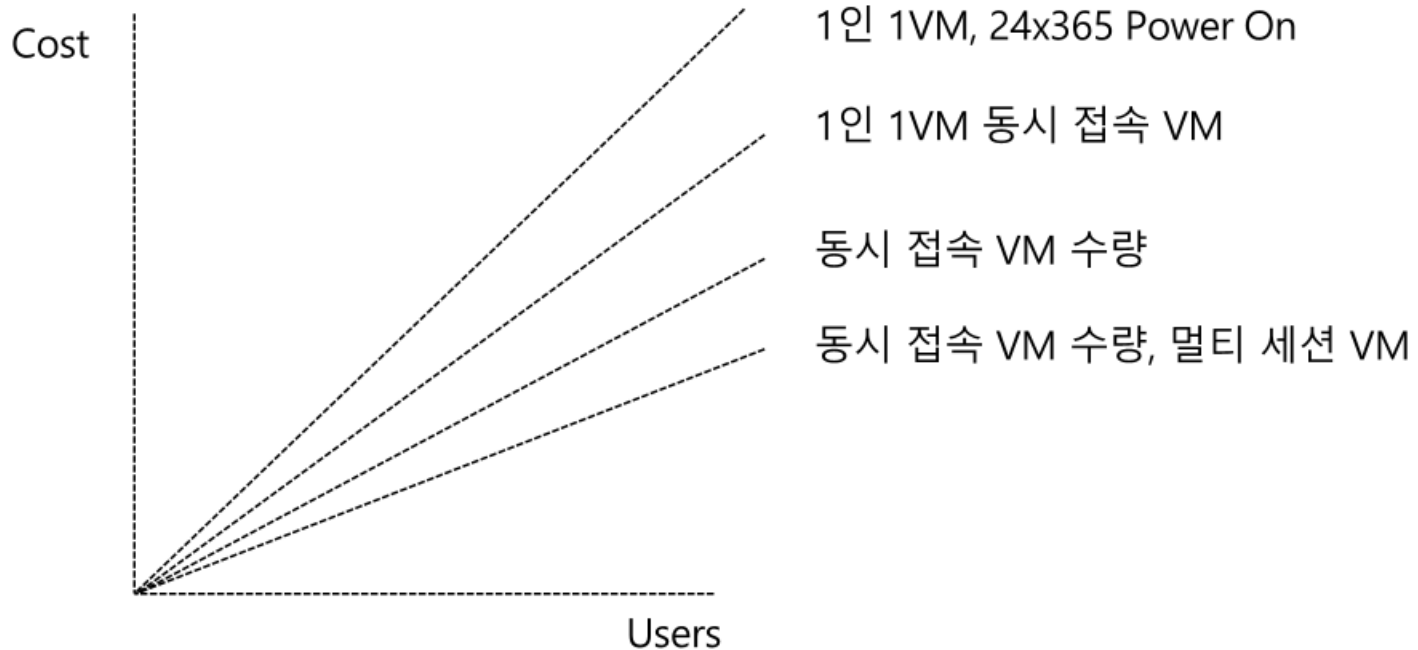
Create Catalog

Select instance type for machine catalog

Citrix VDI / DaaS Platform



구성 방식에 따른 Citrix VDI price curve

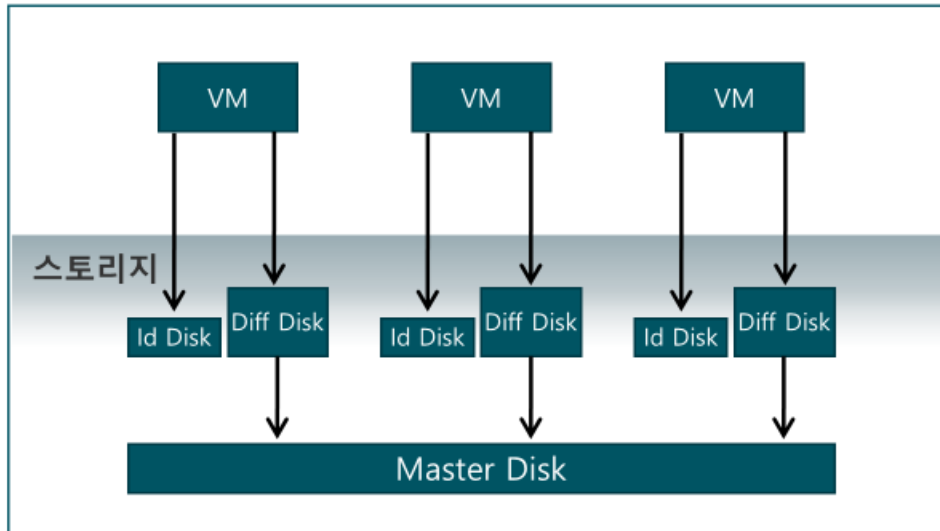


Citrix VDI price curve에 따른 적용 기술

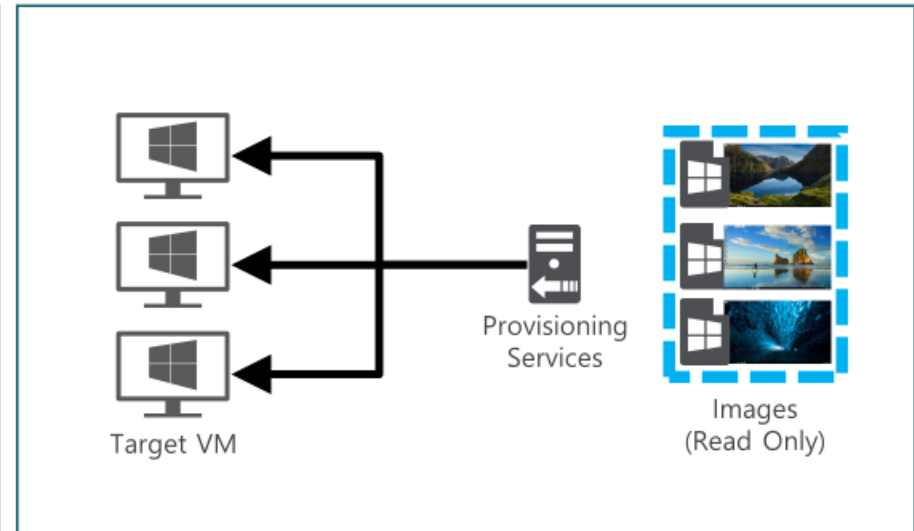
| 4000명 예시 | VM 수 | VM Disk 수 | Private Cloud | Public Cloud |
|-------------------------|-------------|-----------|--------------------------|------------------------------|
| 1인 1VM, 24x365 Power On | 4,000 | 4,000 | | |
| 1인 1VM 동시 접속 | 4,000 | 4,000 | Citrix Autoscale | Citrix Autoscale + Hibernate |
| 동시 접속 VM 수량 | 2,400 (60%) | 2,400 | Citrix MCS UPM | Citrix Autoscale + Hibernate |
| | 2,400 (60%) | 2,400 | Citrix Provisioning, UPM | Citrix Autoscale + Hibernate |
| 동시 접속 VM 수량, 멀티 세션 VM | 2,400 (60%) | 600 | Citrix MCS/PVS, XenApp | Multi session VM |

VM 이미지 배포 방식

[Citrix MCS 기술]



[Citrix PVS 기술]



사용자 수요에 탄력적 대응(Auto Scale)

1. 사용자 접속 이후 VM 자동 종료
2. VM hibernation (Public Cloud)
3. VM 자동 삭제

Manage Autoscale Enabled
Windows 10

General

Schedule and Peak Times

If you expect a set of users to consume the machine resources at a specific time on specific days, use Autoscale to set multiple schedules that include specific days of the week. You can then adjust the number of machines available during those times. Designate peak usage times for optimized behavior and to control other settings such as capacity buffer under Load-based Settings. [Learn more](#)

[Set schedules](#)

Weekdays

| Days applied: | Mon | Tue | Wed | Thu | Fri | Sat | Sun |
|---------------|-----|-----|-----|-----|-----|-----|-----|
| Machines | 5 | 5 | 5 | 5 | 5 | 5 | 5 |

Local 12:00 AM 03:00 AM 06:00 AM 09:00 AM 12:00 PM 03:00 PM 06:00 PM 09:00 PM 12:00 AM

Peak times

> Weekend

Save Cancel

Manage Autoscale Enabled
Windows 10

General

Load-based Settings

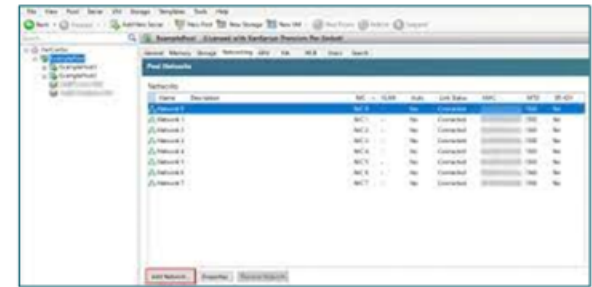
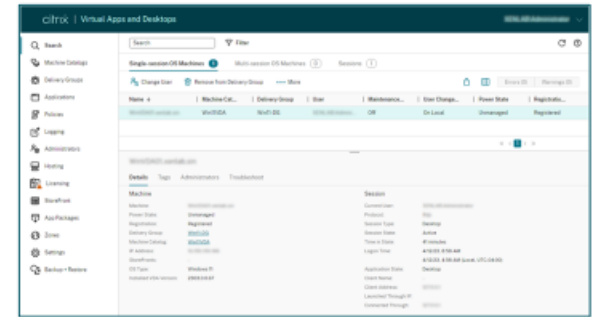
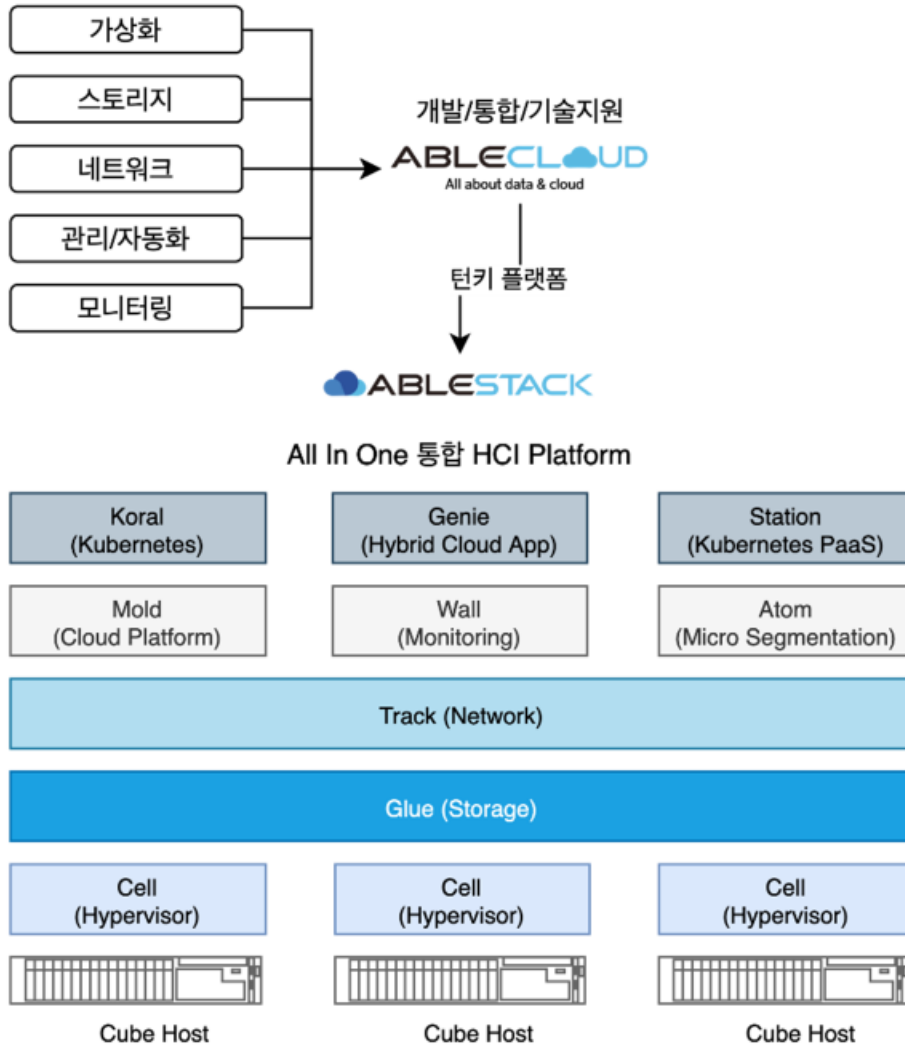
Capacity buffer is used to accommodate sudden spikes in demand by keeping a buffer of machines powered on based on the maximum load index of the delivery group. By default, the capacity buffer is 10% of the maximum supported load index of the delivery group. A lesser value decreases the cost. A greater value ensures an optimized user experience so that users do not have to wait for additional machines to power on when launching sessions. [Learn more](#)

During peak times During off-peak times

Capacity buffer (%): 10 10

Save Cancel

I/O 분산을 통한 VDI 성능 확보 = Cost



citrix | Virtual Apps and Desktops
XenServer

